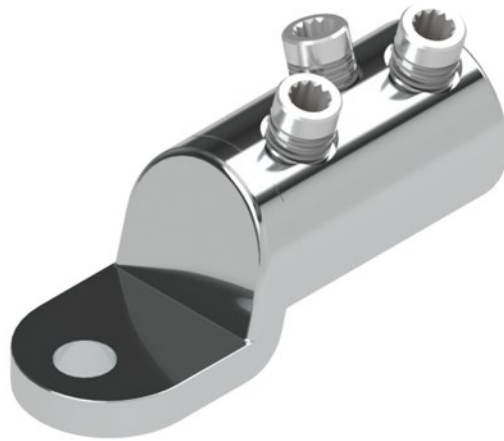


Mechanical termination lug
with moisture / contaminant
block for medium voltage
applications

MECHANICAL CONNECTORS

HVTM4/7-16 Mechanical Termination Lug



Principle Application:

Termination of stranded and solid circular cored conductors.

Connector Reference (Part Number)	Core C.S.A. (mm ²) Stranded	Stud Size (mm)
HVTM4/7-16 (51907-44)	500-630	M16
HVTM4/7-12 (51908-71)	500-630	M12

The 'HVTM' range of off-set palm mechanical lugs incorporate an integral moisture block and utilises the patented "universal" range taking shear bolts. The connector comes complete with core stripping guides.

Suitable for all cable voltages up to and including 33000 volts.

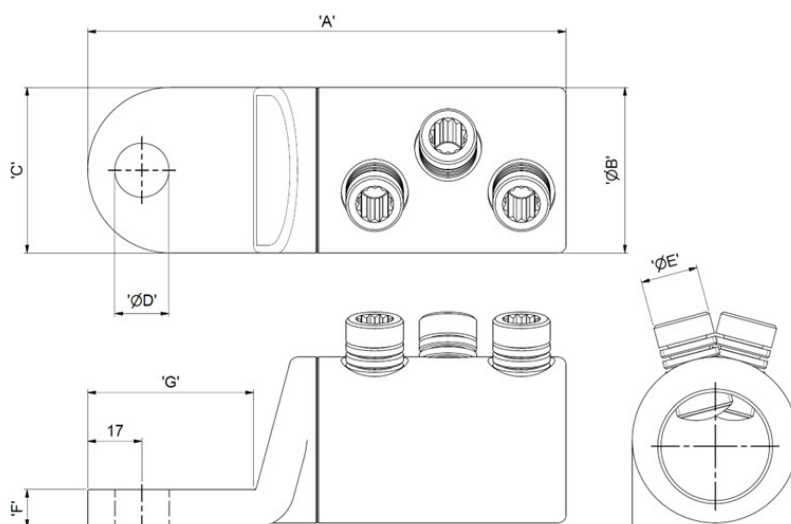
.

Mechanical termination lug with moisture / contaminant block for medium voltage applications

MECHANICAL CONNECTORS

HVTM4/7-16(B) Mechanical Termination Lug

Physical Dimensions:



Connector Reference	Dimensions (mm)					
	'A'	Ø'B'	'C'	Ø'D'	Ø'E'	'F'
HVTM4/7-16	150	52	52	17	M18	12
HVTM4/7-12	150	52	52	13	M18	12

Material:

Copper

Test Specification:

Engineering Recommendation C79/IEC 1238-1

Fitting instructions:

1. Strip insulation from each core equal to the depth of the bore guide + 5mm.
2. Thoroughly abrade exposed conductor cores.
3. Align the cores within the termination body.
4. Tighten the universal bolts consecutively one turn at a time until all the heads have sheared.

The appropriate tooling is to be used at all times, typical examples shown below.



'JTS/7I' Universal Screw Ratchet Tool
(Insulated)



'JTS/16' Universal Screw Socket
(17mm A/F)