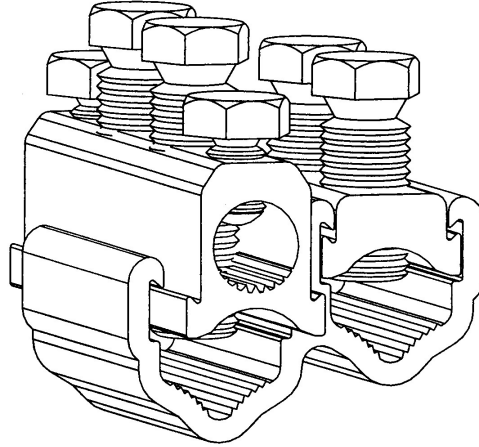


**WB95/S, WB185/S, WB300/S
Connectors****Principle Application**

For LV mains branch jointing (with services) of sector/round, stranded/solid, aluminium/copper conductor cores.

Range

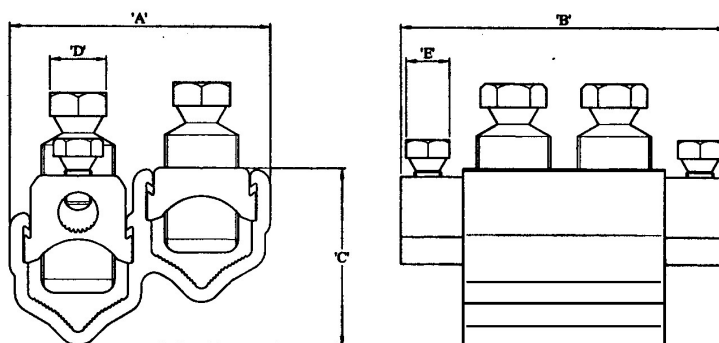
| Connector Ref (Part Number) | Core csa mm ² (In ²) | | | | | | Approx Unit Weight (gms) |
|--------------------------------|---|--------------|--------------|--------------|---------|-----|--------------------------------|
| | Mains | | Branch | | Service | | |
| | Min | Max | Min | Max | Min | Max | |
| WB95/S (51604-31) | 25 (0.04) | 95 (0.15) | 25 (0.04) | 95 (0.15) | 10* | 70 | 235 |
| WB185/S | 35 (0.06) | 185 (0.3) | 50 (0.06) | 185 (0.3) | 10* | 70 | 425 |
| WB300/S | 70 (0.1) | 300 (0.5) | 70 (0.1) | 300 (0.5) | 10* | 70 | 605 |

Note: For jointing other core configurations/sizes please contact Sicame Engineering Department.

The **Sicame WB95/S** range of mains branch connectors accommodates an extensive range of LV mains cable cores whilst providing the facility for upto 2 service connections.

The connector utilises the proven shear head, direct acting bolts (plated) thereby removing the need for pressure plates.

The plated bolts, combined with a standard plated yoke section, allow for the jointing of mains copper conductor cores without the need for conventional brass gauze.

**WB95/S, WB185/S, WB300/S
Connectors****Physical Dimensions**

| Connector Ref (Part Number) | Dimensions (mm) | | | | |
|--------------------------------|-----------------|------|------|--------|--------|
| | A | B | C | D | E |
| WB95/S (51604-31) | 50.0 | 79.0 | 36.5 | 13 A/F | 13 A/F |
| WB185/S | 67.0 | 90.0 | 44.5 | 17 A/F | 13 A/F |
| WB300/S | 78.0 | 98.0 | 53.0 | 17 A/F | 13 A/F |

Material

Aluminium Alloy, Copper Alloy (Service Shear Screw)

Test Specification

Designed to meet the requirements of Engineering Recommendation C79 and IEC 1238-1.

Stranded service conductor less than 10mm² should be doubled and re-doubled, where necessary, to achieve a satisfactory cross section area.