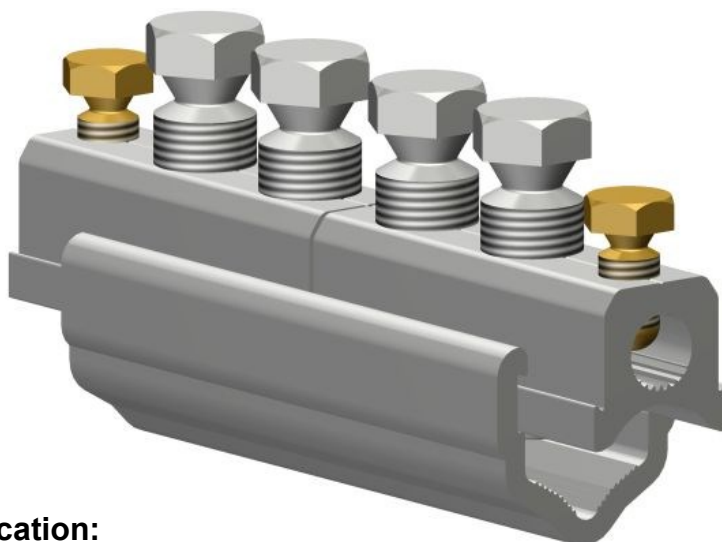


Straight-through mains connectors (with single/double service)

MECHANICAL CONNECTORS

UM95/S, UM185/S & UM300/S Connectors



Principle Application:

For LV straight jointing (with services) of sector/round, stranded/solid, aluminium/copper conductor cores.

Range:

Connector Reference (Part Number)	Mains mm ² (In ²)		Service (mm ²)	
	Min	Max	Min	Max
UM95/S	25 (0.04)	95 (0.15)	10*	70
UM185/S	35 (0.06)	185 (0.03)	10*	70
UM300/S (3395-529)	70 (0.1)	300 (0.5)	10*	70

Note: For jointing other core configurations/sizes please contact Sicame Engineering Dept

The **Sicame UMxxx/S** range of straight through mains connectors accommodates an extensive range of LV mains cable cores whilst providing the facility for up to 2 service connections.

The connector utilises the proven shear head direct acting bolts (plated) thereby removing the need for pressure plates.

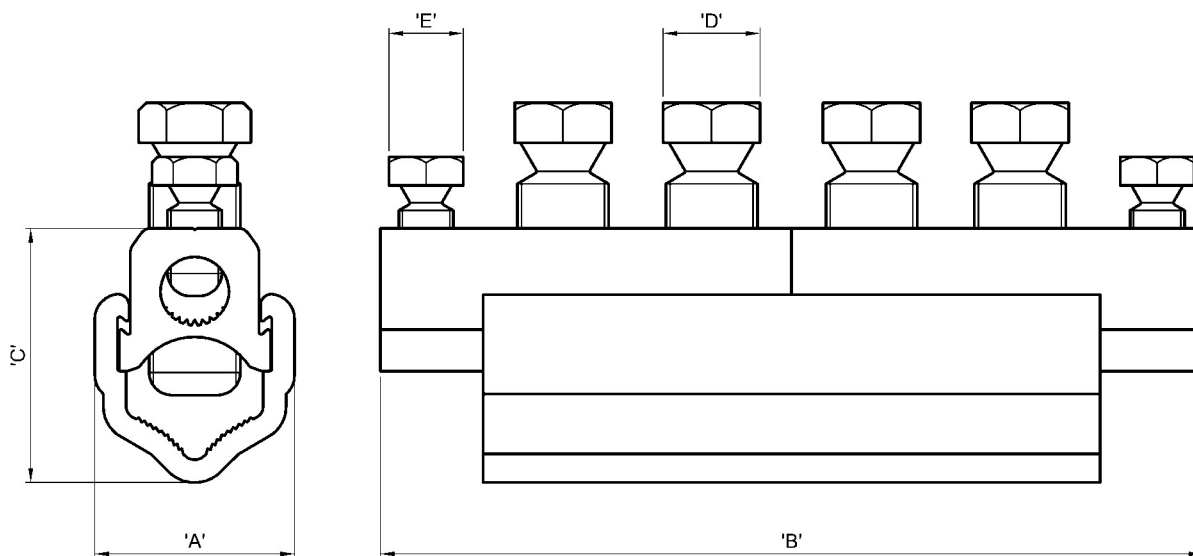
The plated bolts, combined with a standard plated yoke section, allow for the jointing of mains copper conductor cores without the need for conventional brass gauze.

Straight-through mains connectors (with single/double service)

MECHANICAL CONNECTORS

UM95/S, UM185/S & UM300/S Connectors

Physical Dimensions



Connector Reference (Part Number)	Dimensions (mm)				
	'A'	'B'	'C'	'D'	'E'
UM95/S	26.0	122.0	36.5	13 A/F	13 A/F
UM185/S	35.0	144.0	44.5	17 A/F	13 A/F
UM300/S (3395-529)	41.0	158.0	51.0	17 A/F	13 A/F

Material:

Aluminium Alloy, Copper Alloy (Service Shear Screws)

Test Specification:

Designed to meet the requirements of Engineering Recommendation C79 and IEC 1238-1.

Stranded service conductor less than 10mm² should be doubled and re-doubled, where necessary, to achieve a satisfactory cross section area.