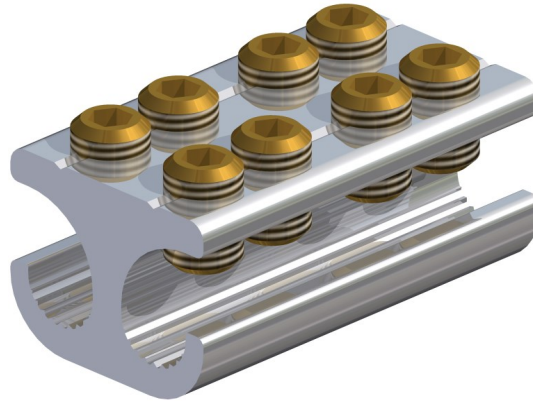


Double Branch Connector - Side Entry

MECHANICAL CONNECTORS

MB21/1A XL Connector



Principle Application:

Stranded and solid shaped service conductors.

Range:

Product Reference (Part Number)	Type	Core c.s.a. (mm ²)	
		Min	Max
MB21/1A XL (4857-528)	Branch	4*	35

Note: For jointing other core configurations/sizes please contact Sicame Engineering Dept

The **Sicame MB21/1A XL** mechanical connector is designed for double service branch connections on stranded or solid cable. The ferrules are manufactured in tinned aluminium alloy for suitability of jointing both aluminium and copper conductor cores.

Secondary Application:

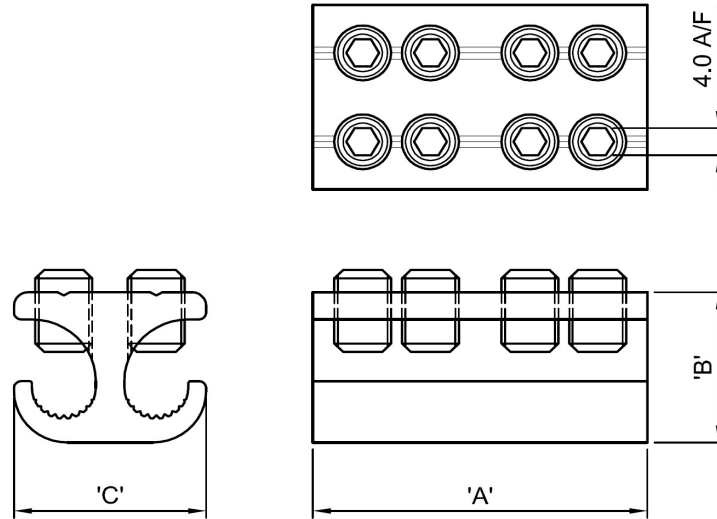
Stranded and solid circular conductors

Product Reference (Part Number)	Type	Core c.s.a. (mm ²)	
		Min	Max
MB21/1A XL (4857-528)	Branch	4*	35

Note: For jointing other core configurations/sizes please contact Sicame Engineering Dept

MB21/1A XL Connector

Physical Dimensions



Connector Reference (Part Number)	Dimensions (mm)		
	'A'	'B'	'C'
MB21/1 AXL (4857-528)	47.0	22.0	27.0

Material:

Aluminium Alloy (Tinned)

Test Specification:

BS EN 61238-1. Test Report No: TTR/267 and 275

Fitting Instructions:

1. Cut the cables to length and strip the core insulation equal to the length of the connector +3mm.
2. Thoroughly abrade all conductors to be joined.
3. Align cores within connector and tighten screws on each side of the connector consecutively, until tight.

Note:

* Conductor cores 4mm² and below should be doubled, and if necessary doubled again, to achieve the necessary cross-sectional area.