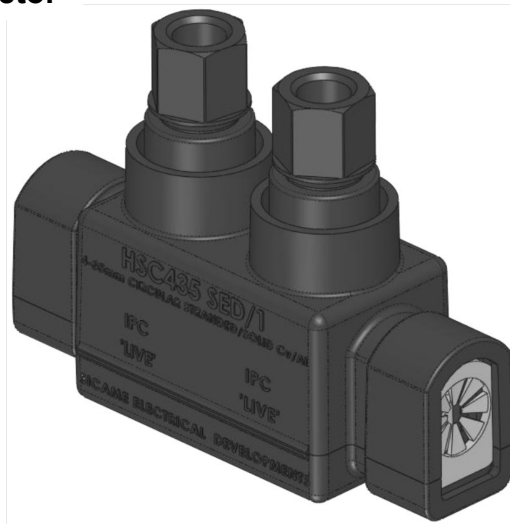


LV Fully Insulated,
In-Line Service,
Insulation Piercing
Connector

MECHANICAL CONNECTORS

HSC435 SED/1 Connector



Principle Application:

Stranded and solid circular service conductors.

Range:

Connector Reference	Core csa (mm ²)	
	Min	Max
HSC435 SED/1	4	35

Note: For jointing other core configurations/sizes please contact Sicame Engineering Dept

The Sicame '**HSC435 SED/1**' insulation piercing connector has been specifically designed to improve the level of safety during live jointing by eliminating the need to remove core insulation.

This connector offers a quick, reliable and **inherently safe** method of connection for stranded and/or solid circular conductors.

This connector is fully torque controlled utilising the latest shear bolt technology to ensure a reliable long term connection.

The use of a connector holding tool is recommended:-



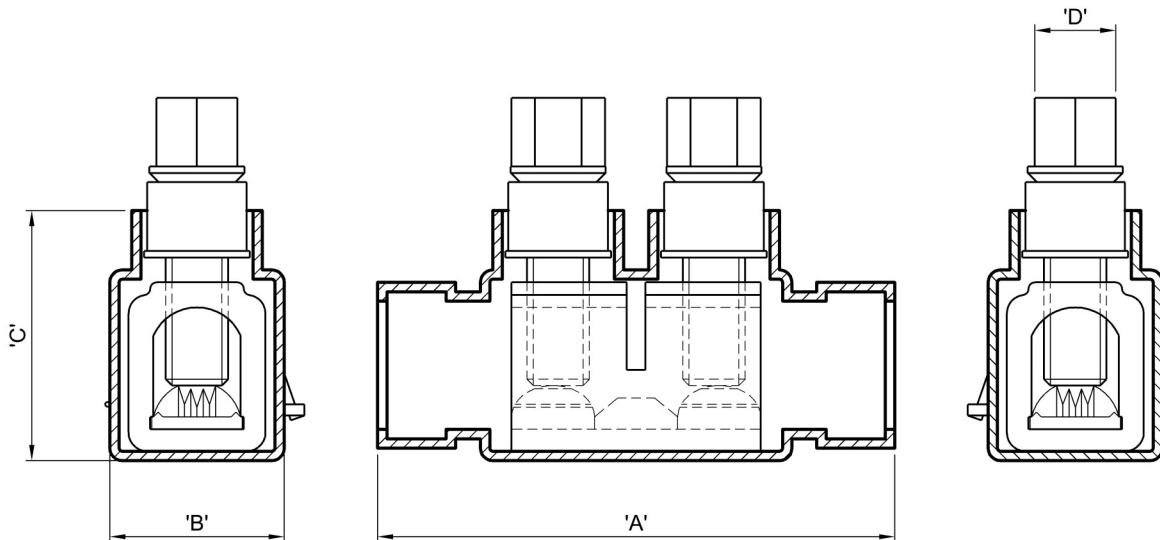
'JTN/8' Insulated Holding Tool

LV Fully Insulated,
In-Line Service,
Insulation Piercing
Connector

MECHANICAL CONNECTORS

HSC435 SED/1 Connector

Physical Dimensions



Connector Reference	Dimensions (mm)			
	'A'	'B'	'C'	'D'
HSC435 SED/1	83.0	28.0	40.0	13 A/F

Material:

Casing: Polypropylene
Body: Aluminium Alloy
Teeth: Copper Alloy (Tinned)

Test Specification:

Tested to BS EN 61238-1 : 2003.

Type Test Report No. TTR/290-HSC435-4C
TTR/291-HSC435-A35