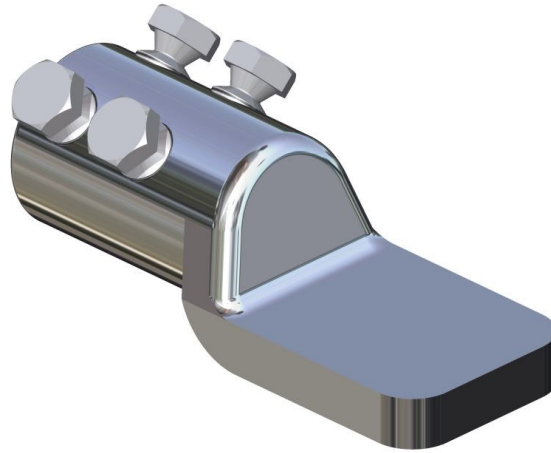


**ML7/SH Termination**



**Principle Application:**

Termination of solidal conductor cores.

**Range:**

Connector Reference (Part Number)	Core c.s.a. (mm <sup>2</sup> )		Stud Size (mm)
	Min	Max	
ML7/SH (51907-17)	600 (4 x 150)	740 (4 x 185)	-
ML7/SH - 4 x8			4 x M8
ML7/SH - 4 x10			4 x M10
ML7/SH - 20			M20

**Note:** For jointing other core configurations/sizes please contact Sicame Engineering Dept

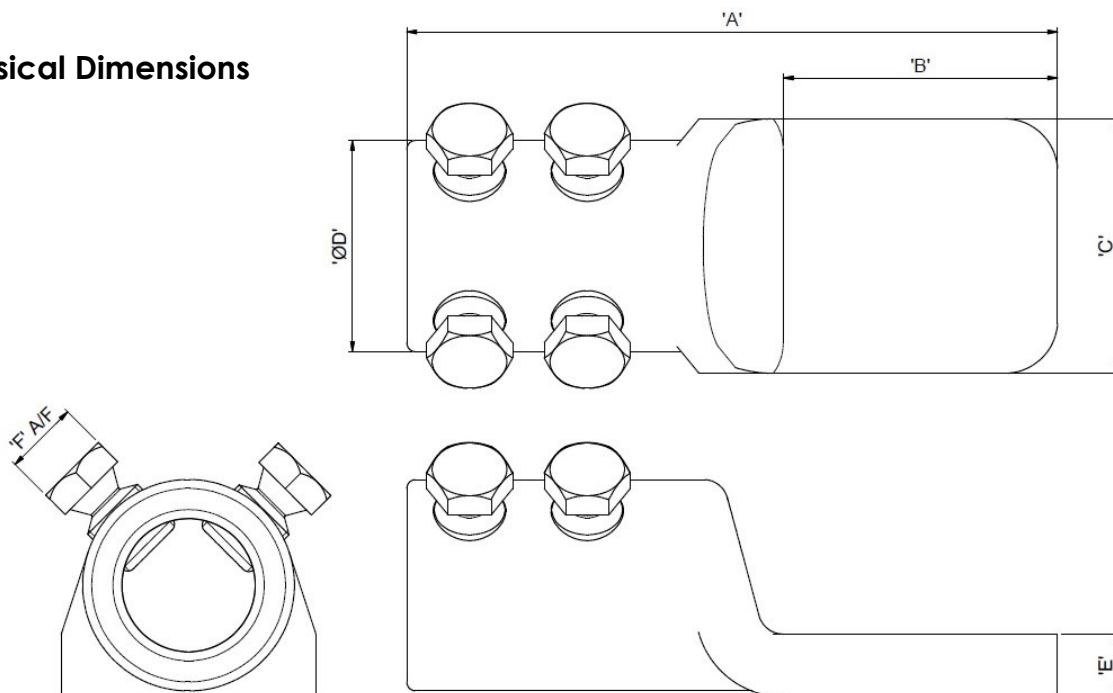
The **Sicame ML7** mechanical lugs are manufactured from an aluminium forging, thereby providing an integral moisture block.

The lugs utilise the proven shear head technology with direct contact onto the cable cores thereby removing the requirement for a pressure pad.

# Mechanical Termination

## ML7/SH Termination

### Physical Dimensions



Connector Reference	Dimensions (mm)						Stud Size (mm)
	'A'	'B'	'C'	'ØD'	'E'	'ØF'	
ML7/SH (51907-17)	166	70	65	54	16	17	-
ML7/SH - 4 x 8	166	70					4 x M8
ML7/SH - 4 x 10	151	55					4 x M10
ML7/SH - 20	166	70					M20

### Material:

Aluminium Alloy

### Fitting Instructions:

1. Strip insulation from each core equal to the depth of the bore + 5mm.
2. Thoroughly abrade exposed conductors.
3. Fully insert core within the barrel of the connector.
4. Tighten the shear bolts consecutively one turn at a time until all the heads have sheared.

©COPYRIGHT

Sicame UK Ltd operates a continuous product design development and improvement programme and offers active co-operation establishing satisfactory procedures and systems to meet new or unusual jointing situations. The company reserves the right to introduce modifications to the above designs and specifications without prior notice.

**sicame**  
UK

1.57j

APRIL 2020