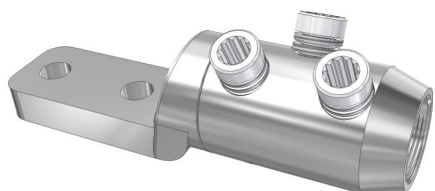


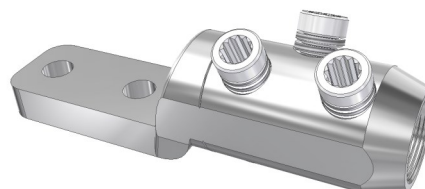
Mechanical termination
with moisture / contaminant
block

MECHANICAL CONNECTORS

LVML/x-2H Aluminium Connectors



LVML/x -2H



LVML/3A-2H

Principle Application:

Termination of circular stranded aluminium or copper conductors.

Range:

Product Reference (Part Number)	Stranded Core Size		Stud Size
	Min	Max	
LVML/1-2H (3395-628)	#2 (34mm ²)	250 kcmil (127mm ²)	2 x 1/2"
LVML/1.5-2H	#2 (34mm ²)	350 kcmil (177mm ²)	2 x 1/2"
LVML/2-2H (51905-85)	2/0 (67mm ²)	500 kcmil (253mm ²)	2 x 1/2"
LVML/3-2H (51905-84)	500 kcmil (253mm ²)	1000 kcmil (507mm ²)	2 x 1/2"
LVML/3A-2H (51905-97)			

The 'LVML/x-2H' range of NEMA 2-hole pad mechanical terminations are machined from high grade aluminium alloy bar to provide a solid 'block' to prevent any external migration of moisture to the cable core.

The product utilises the patented fully range-taking Mk1 universal shear screws to ensure a good, consistent mechanical and electrical connection onto the cable core.

To ensure that the universal shear screws shear at the correct shear torque and 'flush' with the connector body, any of the following sockets must be used...



'JTS/9' 1/2" sq Drive



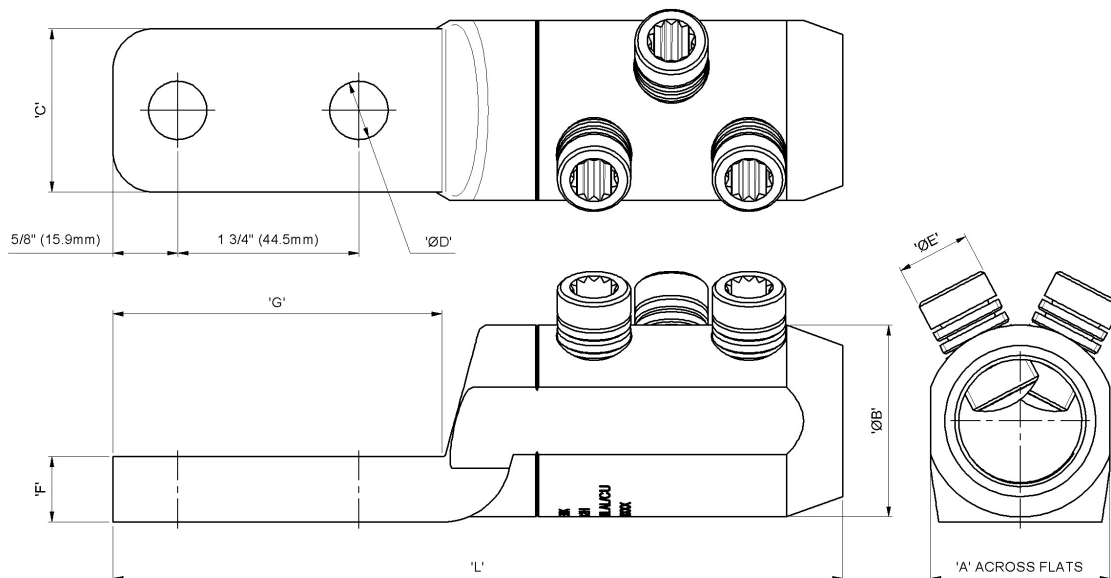
'JTS/37' 5/8" AF Drive (Disposable)

Mechanical termination
with moisture / contaminant
block

MECHANICAL CONNECTORS

LVML/x-2H Aluminium Connectors

Physical Dimensions:



Connector Reference	Dimensions							
	'L'	'A'	'ØB'	'C'	'ØD'	'ØE'	'F'	'G'
LVML/1-2H (3395-628)	5.86" (149mm)	N/A	1.10" (28mm)	1.41" (36mm)	0.56" (14.3mm)	2 x M16	3/8" (10mm)	3.29" (83.7mm)
LVML/1.5-2H	6.0" (152mm)	N/A	1.25" (32mm)	1.41" (36mm)	0.56" (14.3mm)	2 x M16	3/8" (10mm)	3.29" (83.7mm)
LVML/2-2H (51905-85)	6.06" (154mm)	N/A	1.33" (34mm)	1.57" (40mm)	0.56" (14.3mm)	2 x M16	7/16" (11mm)	3.18" (80.7mm)
LVML/3-2H (51905-84)	7.04" (179mm)	N/A	1.85" (47mm)	1.57" (40mm)	0.56" (14.3mm)	3 x M18	5/8" (16mm)	3.18" (80.7mm)
LVML/3A-2H (51905-97)		1.73" (44mm)						

Material: Aluminium Alloy

Test Specification: Designed to meet the requirements of ANSI C119.4
Class 2 Partial Tension / IEEE 404

Test Report No: 274

Fitting Instructions:

1. Strip the insulation from the core equal to the depth of the bore.
2. Wire brush the exposed conductor core and wipe clean.
3. Align and position the conductor core into the bore ensuring that the core is fully inserted.
4. Hard tighten the universal shear screws and then torque tighten one turn at a time using the JTS/9 tool, until the bolts have sheared.

©COPYRIGHT

Sicame UK Ltd operates a continuous product design development and improvement programme and offers active co-operation establishing satisfactory procedures and systems to meet new or unusual jointing situations. The company reserves the right to introduce modifications to the above designs and specifications without prior notice.

sicame
UK

1.57f

SEPTEMBER 2021